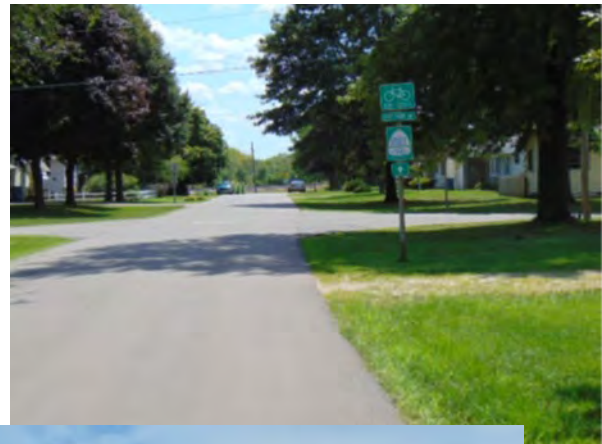




CITY OF CAMANCHE, IOWA
PARK & RECREATION SYSTEM
STRATEGIC PLAN
FISCAL YEARS ENDING 2022 – 2030



ACKNOWLEDGEMENTS

Mayor

Trevor Willis

City Council

Dave Bowman

Brent Brightman

Marty Schnoor

Paul Varner – Mayor Pro Tem

Danny Weller

Park and Recreation Commission

Casey Green – Chairperson

Michael Burmahl

Randall Cook

Linda Putman

Kimberly Willis

City Administrator

Andrew S. Kida

Consultant

East Central Intergovernmental Association

The Residents of Camanche, Iowa

Adopted __ date __

Cover photos: Top Right – City of Camanche website; Top left: City of Camanche website; Bottom Center: ECIA

TABLE OF CONTENTS

1. Purpose and Need

- Where are we now?
- Where do we want to be?
- How do we get there?

2. Background

- Demographics
- Park and Recreation Commission
- Public Works Department

3. Community Engagement

- Community Survey

4. Park and Recreation System Resources

- Parks
- Boat Ramps
- Recreation Services
- Bike and Pedestrian Network

5. Implementation of Planned Improvements

- Park and Recreation Commission Inventory and Recommendations
- Implementation Guidelines

6. Schedule and Inventory of Improvements

- Parking for Parks
- Neighborhood Parks
- Pocket Parks
- Sensory Playground
- Bike and Pedestrian Network

7. Strategic Plan

Strategic Goals

Park and Recreation Budget

Timeline

8. Aerial Maps of City Parks and Boat Ramps

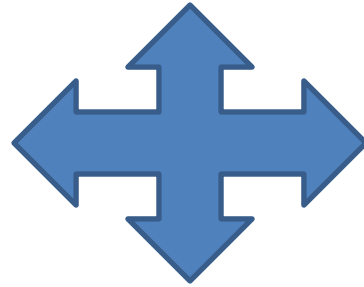
1. PURPOSE AND NEED

Strategic planning asks three questions:

Where are we now?

Where do we want to be?

How do we get there?



Where are we now?

The 1990 Americans with Disabilities Act (ADA) in 1990 is the Federal mandate to ensure that the rights of individuals with disabilities in the United States are protected and preserved. Title II of the ADA covers programs, activities, and services provided by public entities such as cities. ADA requirements have been in effect since January 1992, for new construction, building alterations/additions, and maintaining features that provide access to persons with disabilities.

In response, the City of Camanche Park and Recreation Commission conducted an inventory of parking, amenities, and facilities in our parks, and identified potential ADA improvements. This information informed an ADA Transition Plan to make our parks more accessible to persons with disabilities. This plan was approved by the City Council in 2018.

In addition, the City Council has adopted the 2020 Trail Plan. This plan seeks to improve connectivity and bike trail extensions within the community to promote economic development and increase safety for bicyclists and pedestrians. These planned improvements in turn can enhance access for persons with disabilities. These improvements are part of the 2020 Clinton County Bike and Pedestrian Plan.

After holding goal setting sessions in 2019, the City Council has made the determination that our parks system needs improvements to improve quality of life for Camanche. The City Council has adopted the 10-Year Capital Improvement Plan, which calls for \$1.5 million in park upgrades over the next ten years to be applied in three phases and \$400,000 for 1st Street expansion improvements for a bike lane.

Where do we want to be?

Successful planning is based on community visioning and engagement. The City of Camanche has engaged the community on assets, challenges, and desired improvements of our park and recreation services and facilities. A 2018 community survey indicates support for certain aspects of park improvements. Incorporating the community input with the recommendations of the adopted plans will enable us to get where we want to go and to become what we hope to be.

How do we get there?

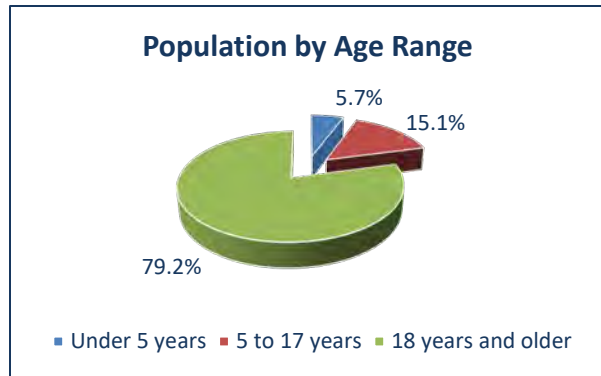
The recommendation is that the strategic plan be implemented over a period of time. This strategic plan provides guidelines, establishes priorities, and identifies funding sources to create a systematic, prioritized, and funded process for elimination of barriers for persons with disabilities to obtain access to municipal parks and recreation services and infrastructure. By eliminating barriers for persons with disabilities, we also improve access for school-age kids, senior citizens, and parents with young children. Everyone benefits!

2. BACKGROUND

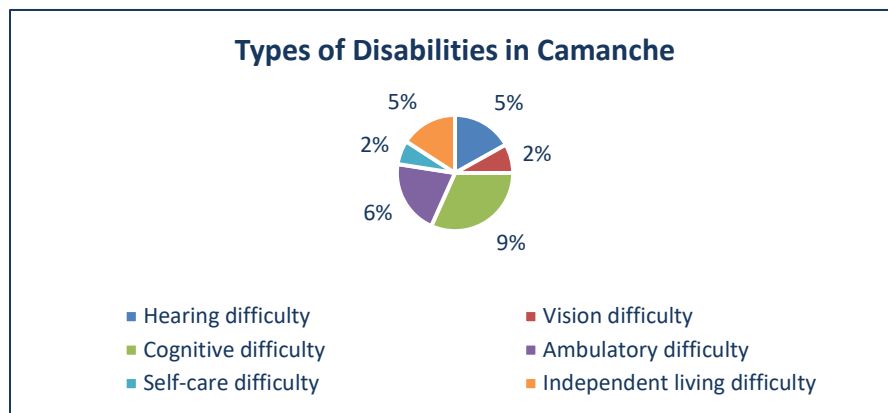
Demographics

The US Census Bureau's 2020 population for Camanche is 4,570, up from 4,448 in 2010. The remaining statistics are the Census Bureau's 2019 American Community Survey 5-Year Estimates.

The City of Camanche has a median age of 49.3 years compared to 38.1 in the US, 11 years younger.



In Camanche 79.2% of the population is 18 years or older. The remaining 20.8% of residents are children, divided into 5.7% under age 5 and 15.1% between 5 to 17 years. Children in Camanche are slightly outnumbered by persons over the age of 65, who comprise 21.2% of the population.



The disabled population in Camanche is 16.8% of the total compared to 12.6% for the US. The chart here shows the types of disabilities experienced by residents of Camanche. Over half of the disabilities experienced by Camanche residents are in the category of cognitive difficulty.

Park and Recreation Commission

The Park and Recreation Commission is a five-member board of City residents age 18 and older appointed by the City Council to serve two-year terms. The powers and duties of the Commission are set forth by City ordinance. They generally include:

- To supervise all city parks, park concessions, city park operating revenues, and city recreation equipment.
- To direct and plan changes to park functions or usage subject to Council Approval, or as directed by the City Council.
- To manage the general fund monies allocated for recreational purposes by the Council.
- To annually report to the City Council an estimate for operation and maintenance of recreational facilities for the coming fiscal year, the expenses for the preceding year, and the income expected for the next fiscal year from sources other than taxation.

Public Works Department

The City of Camanche Public Works Department is responsible for maintenance and operation of the City's parks, recreation facilities, equipment and infrastructure. These services utilize City

funds budgeted for parks and recreation by the City Council for operating and capital expenses.

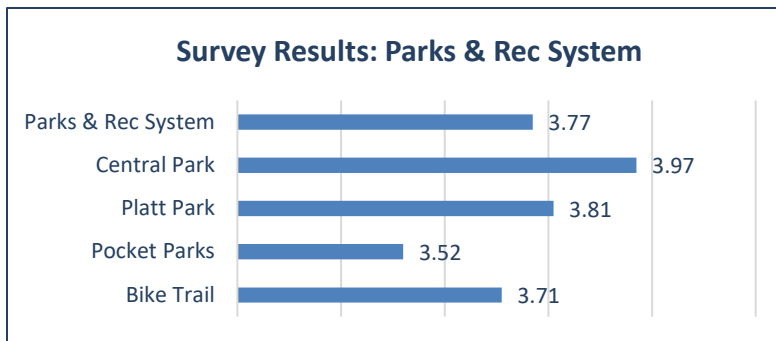
The Public Works Department also is responsible for the maintenance and operation of the City’s bike and pedestrian network and municipal boat ramps. The Park and Recreation Commission’s powers and duties do not extend to these two components of the municipal park and recreation system.

3. COMMUNITY ENGAGEMENT

The City of Camanche used a community survey to help inform this strategic plan. The 2018 community survey included general questions about City services, and specific questions about the Parks and Recreation system.

Community Survey

In July, 2018, the City of Camanche and the Hometown Pride Committee conducted a Rebranding and Public Input Survey. The purpose was to create a rebranding of the City and to help identify what the residents of Camanche felt was important. The survey was also designed to gauge the residents’ opinions of the performance of City services. All surveys were taken electronically. A total of 275 surveys were collected and analyzed. Ratings were made on a scale of 1 to 5, with 1 being Not Satisfied, and 5 being Completely Satisfied.



The chart of Community Survey Results reflects a high level of satisfaction in city services for the Parks and Recreation system with an average score of 3.77. Respondents had favorable opinions about Central Park, Platt Park, the Pocket Parks, and the Bike Trail as well.

One of the most common responses to the question “What important issues, if any, do you feel need to be addressed to improve Camanche as a community?” was recreation. There were many suggestions of a splash pad for young people. When asked “What three things do you liked about Camanche?” respondents mentioned the parks frequently. When asked “If you could change anything about Camanche, what would it be?” many respondents pointed to more activities for young people, including a splash pad.

4. PARK AND RECREATION SYSTEM RESOURCES

Parks

City parks play a vital role in the physical, social, and economic well-being of residents and visitors. The City of Camanche has eleven parks covering about 23 acres that offer a variety of recreational amenities.

Neighborhood parks, as the name implies, tend to serve communities at a neighborhood level. Pocket parks are generally small parks that provide unique recreational spaces in a community All but two pocket parks have off-street parking available.

Map Key	Name	General Location	Type	Acres	Parking
1	Platt Park	along 9th Avenue	Neighborhood	14.20	Yes
2	Central Park	Washington Blvd between 6th & 7th Avenues	Neighborhood	1.83	Yes
3	George Peck Park	13th Avenue and 7th Street	Neighborhood	3.05	Yes
4	Triangle Park	North Washington Blvd and 11th Place	Pocket	0.88	Yes
5	Lum Park	1st Avenue	Pocket	0.74	No
6	Anthony Park	12th Avenue and 3rd Street	Pocket	0.54	No
7	Buffalo St. Park	13th Avenue - riverfront	Pocket	0.38	Yes
8	Far West Park	12th Avenue - riverfront	Pocket	0.31	Yes
9	Main St. Park	11th Avenue -riverfront	Pocket	0.27	Yes
10	Chicago Park	9th Avenue - riverfront	Pocket	0.23	Yes
11	Maxan St. Park	7th Avenue - riverfront	Pocket	0.17	Yes

Below is a chart of park system amenities. With just over 14 acres, Platt Park also can be considered a community park due to its size and range of amenities.

City of Camanche Park System: Recreational Amenities

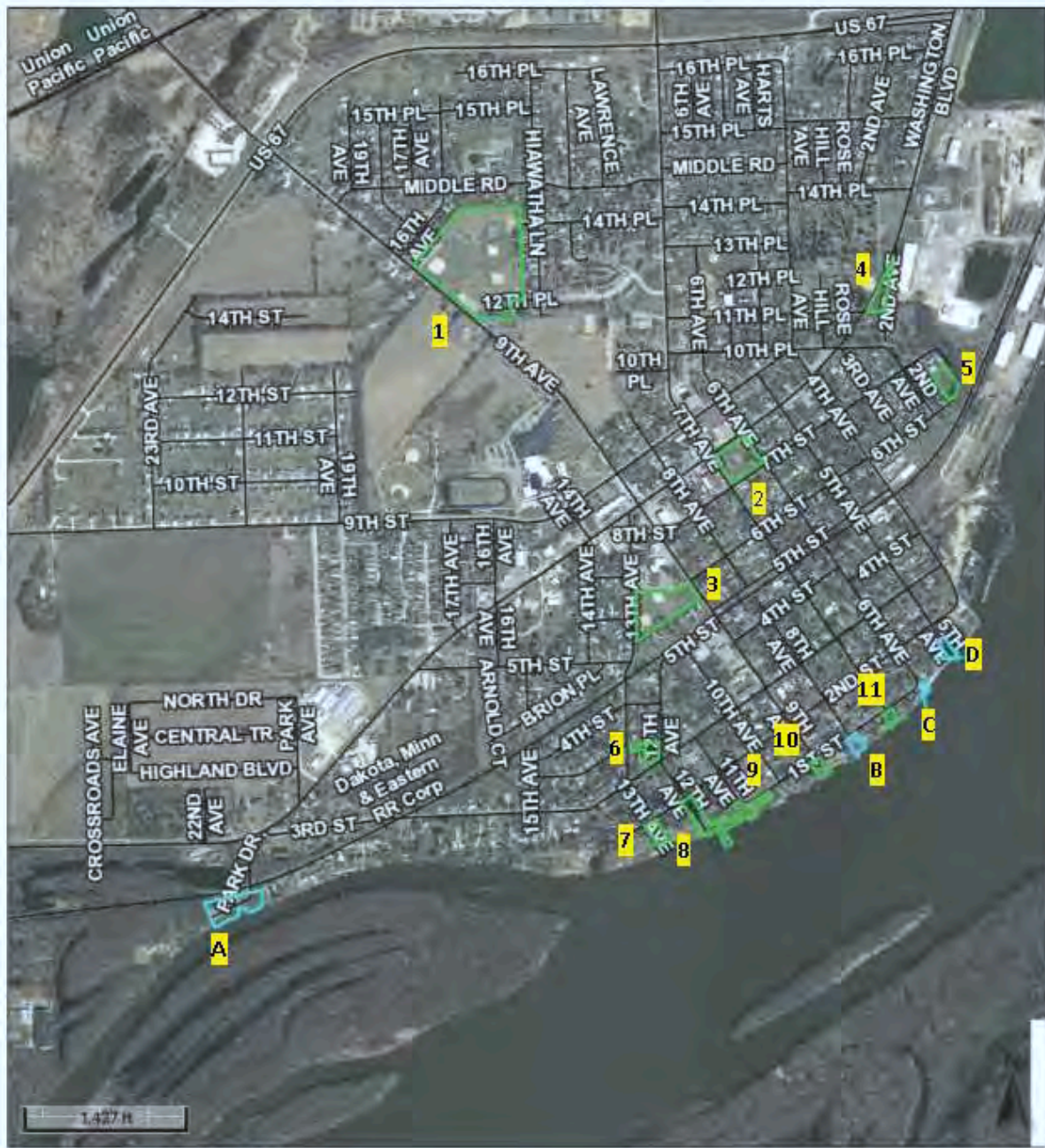
Name of Park	Off-Street Parking	Picnic tables	Benches	Restrooms	Pavilion	Play Equipment	Basketball Hoop/Court	Baseball Field	Softball Field	T Ball Field	Tennis Court	Horseshoe Pits	Sand Volleyball	Concession Area	Exercise Equipment
Platt Park	Y	Y	Y	Y	Y	Y	Y	Y	Y	Y	Y	Y	Y	Y	Y
Central Park	Y	Y	Y	P	Y	Y									
George Peck Park	Y		Y	P		Y		Y					Y	Y	
Triangle Park	Y		Y												
Lum Park					Y	Y									
Anthony Park		Y	Y		Y	Y									
Buffalo St. Park	Y	Y	Y												
Far West Park	Y		Y												
Main St. Park	Y	Y	Y												
Chicago Park	Y		Y												
Maxan St. Park	Y		Y												

Y = Yes, P = Portable Restroom

The aerial map below identifies the geographic locations of the City’s public parks. The three neighborhood parks (1,2, 3) are centrally located. An array of pocket parks (7, 8, 9, 10, 11) lines the City’s riverfront. The Library Dock is associated with Far West Park, adjacent to the Public Library.

City of Camanche

Parks and Boat Ramps



Source: ECIA, using Clinton County Beacon Geographic Information System (GIS)

Boat Ramps

The City of Camanche Public Works Department maintains four boat ramps that support recreational traffic for boating and fishing. The aerial map above shows the boat ramp locations: (A) Swan Slough, (B) 5th Avenue where a fishing dock also is located, (C) 6th Avenue, and (D) 8th Avenue. The Library Dock in Far West Park (8) provides a location for fishing.

Recreation Services

Parks provide opportunities for residents and visitors to experience the area’s unique natural features. Parks can also serve as gathering spaces. From a small family celebration to a summer festival, outdoor gathering spaces allow people to interact and build relationships that are the foundation of a strong community. The Park and Recreation Commission provides some funding towards the following recreation services which occur in various city parks throughout the year: Kiwanis Mardi Gras, Party in the Park, Sharing Tree, Boy’s Baseball and T-Ball, Camanche Days, and Christmas in Camanche, Camanche Holiday House.

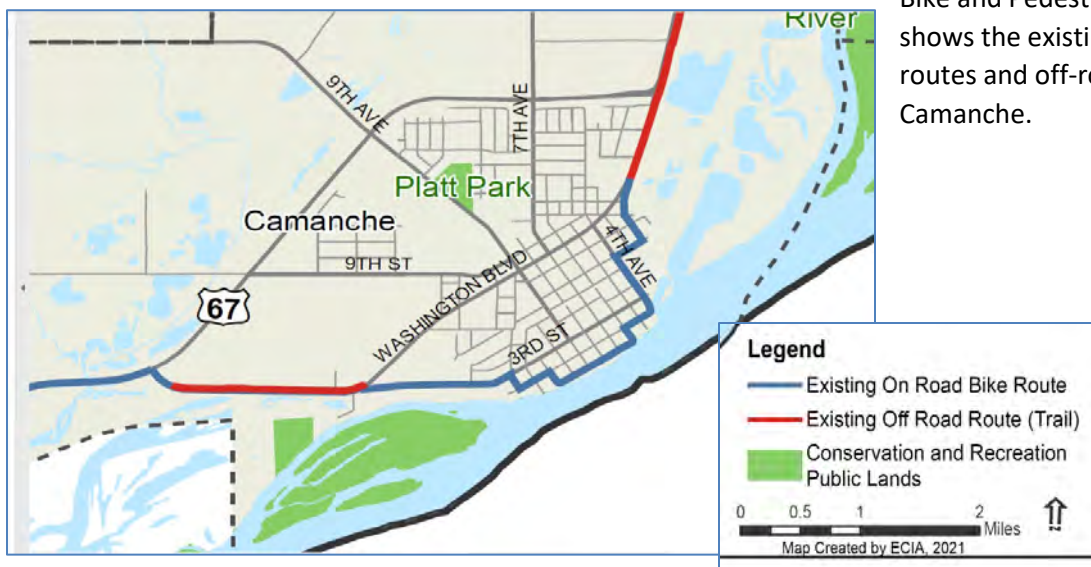
Bicycle and Pedestrian Network

Existing bicycle and pedestrian facilities in Camanche can be classified into three categories: off-street trails, on-street routes, and sidewalks. The City’s Public Works Department maintains a bike path and a network of associated roads and sidewalks designated as a path for bicycling and trails. The City of Camanche has 4.75 miles of trails comprised of bike paths, the Mississippi River Trail (MRT), and non-conforming sidewalks. These trails are frequented by local residents as well as visitors to Camanche. The MRT will follow the Mississippi River 2,000 miles on both sides through 10 states, from its headwaters in Minnesota to the Gulf of Mexico. In Camanche, the MRT is an on-street route along the riverfront. At each city park along the MRT route, health and fitness equipment has been installed for both park visitors and MRT users.

Sidewalks are an important part of the pedestrian network, providing necessary walking connections to homes, businesses, and other activities. The minimum width of a multi-use hike/bike trail is 8 feet, while 10 feet is recommended. Sidewalks are typically 4 feet wide, so they are “non-conforming” as bike trails.

Bike paths are classified as multi-use trails that can accommodate both bicyclists and pedestrians and are suitable for most age groups and abilities. Multi-use trails are physically separated from motorized traffic by an open space or barrier and can be in an independent right of way or within a roadway right-of-way. In addition to trails, Camanche bicyclists also have the option to ride on the streets. With an on-street route, bicyclists share the roadway with motor vehicle traffic. This map from the Clinton County

Bike and Pedestrian Plan shows the existing on-road routes and off-road trails in Camanche.



5. IMPLEMENTATION OF PLANNED IMPROVEMENTS

Park and Recreation Commission Inventory and Recommendations

The Park and Recreation Commission conducted an inventory of 9 City parks: Anthony Park, Buffalo Street Park, Central Park, Chicago Street Park, George Peck Park, Lum Park, Main Street Park, Maxan Street Park, and Triangle Park. The inventory included:

- general park location and type (neighborhood, pocket);
- park name sign (presence, type); parking (number and location of spaces including number for person with disabilities);
- park amenities (type and number of benches, picnic tables, refuse receptacles, shelters, memorials);
- play equipment (type, number, condition, ADA accessible);
- exercise equipment (type, number);
- sport facilities (type and number of fields, courts, bleachers, dugouts);
- restroom facilities (number and type – permanent, portable);
- concession facilities;
- water (drinking fountains, spigots);
- fencing (type, location);
- landscaping (shrubs, flower beds, age and condition of trees).

In conjunction with their parks inventory, the Park and Recreation Commission created concept plans for improved ADA compliant parking, play equipment, facilities and amenities for city parks. ***These concept plans are subject to change as field conditions, such as utility connections, are verified.*** These plans were considered during the development of the ADA Transition Plan and of this Strategic Plan.

Implementation Guidelines

These Implementation Guidelines are derived from the 2018 ADA Transition Plan and the Park and Recreation Commission's recommendations. As with all municipalities, the City of Camanche has limited resources to devote to capital improvements. As a city organization, we must prioritize prudently and uniformly to ensure that the public is provided the highest quality infrastructure within the limits of our available funding, personnel and other resources. Our approach to plan implementation, given these constraints, is to prioritize the required actions and improvements. Items with a higher priority will be scheduled for completion sooner than items with a lower priority. For each of the parks and recreation elements listed below, the structure for prioritization will be as follows. This structure was generated based on the impact that the action or improvement would have, the relative location of the improvement in relation to traffic generation, and perceived severity of the shortcoming or non-compliance with ADA regulations.

Priority 1: These are improvements that are deemed to be of an immediate need and as such carry the highest priority. These will be targeted for short-term action within the next 1 to 2 years.

Priority 2: These are improvements that are categorized as important and necessary for scheduling at this time. However, the impact of these actions may not be as high as the Priority 1 Actions, and they may carry a larger financial burden, which makes improvements more difficult to complete in a timely manner. These actions will be targeted for scheduling for completion within the next 2 to 4 years.

Priority 3: These improvements are categorized as a priority to meet full compliance with ADA regulations, but are not feasible for short-term funding. These improvements will be scheduled and included in the annual Parks and Recreation budget as workload and funding permit.

6. SCHEDULE AND INVENTORY OF IMPROVEMENTS

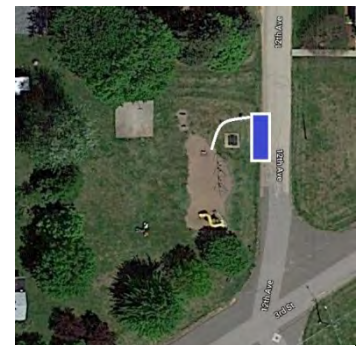
The following subsections contain the inventory information for each of the listed parks and recreation elements, as well as scheduling and prioritization of the planned improvements.

PARKING FOR PARKS

The City of Camanche has eleven parks: three neighborhood parks and eight pocket parks. All but Lum Park and Anthony Park have off-street parking available. Of the parking lots available, there is ADA accessible parking at Platt Park, Triangle Park, and Main Street Park. The parking for Far West St. Park is located in front of the Public Library, which has a designated ADA space. There are no ADA spaces at George Peck Park which shares the City-owned lot with the Camanche School District administration building. There is adequate parking available at the remaining parks to create an ADA compliant space.

Priority 1:

- Restriping of all pocket park lots will happen as funding is available.
- Restripe both parking lots at Central Park to include an ADA space.
- Designate an ADA on-street space for Anthony Park, as shown.
- At Platt Park, designate additional ADA spaces in the north lot by the softball field.
- At George Peck Park: designate ADA spaces in both lots, and add an on-street ADA space along 13th Avenue for the south ballfield.
- Add better signage and paint the stops blue to indicate ADA spaces.



Anthony Park – on-street ADA parking space

Priority 2:

- Needed repair or resurfacing of parking lots will occur as funding is available from the Parks Improvements and/or Parks Maintenance funds, with priority based on highest volume. The Park and Recreation Commission will maintain the inventory and grade the condition of the parking lots.
- Alternative funding through grants may supersede the priority list. Priority will go as follows: Central Park, Platt Park, Pocket Parks, George Peck Park.

Priority 3:

- Anthony Park has street parking available. A parking lot should be added as funding is available.
- Lum Park should have a parking lot installed as a paved road is extended around the park.

NEIGHBORHOOD PARKS

Neighborhood parks in Camanche have limited equipment and accessibility for persons with disabilities.

Central Park

Central Park is the most actively used park within the city of Camanche. Installation of ADA amenities and equipment has been begun in Central Park to accommodate persons with disabilities. Using funding available through budgeting and park upgrades, an ADA compliant portable restroom facility and a wheelchair accessible picnic table have been added. Resurfacing of the basketball court has been completed. One playground surface has been converted to ADA compliant rubber material.

Priority 1:

- Due to heavy use, permanent ADA compliant restrooms are a priority. Water and sewer are closest to the southwest quadrant of the park.
- Restripe both parking lots at Central Park to include an ADA space.

Priority 2:

- Coordinate upgrades to ADA play equipment with installation of rubber surface material. This may take additional funding through the budgetary process or through grants.



Central Park – planned sidewalk system

Priority 3:

- Connect all features for accessibility throughout the park as shown in the aerial photo. Priority sidewalks are in white, with secondary sidewalks serving only picnic tables in yellow. The network uses the basketball court as a central point.



Platt Park

The largest park, Platt Park is the second most used park within the City of Camanche. It is home to the City's most widely attended function, Camanche Days. It is also home to youth sports in the summer including baseball and softball. The Park was developed in 1976 with state funds, which included purchase of the land, equipment, and vaulted bathrooms. Over time, some equipment has deteriorated and the facilities have seen their wear. The Park has adequate ADA parking in both lots, but access to the park is limited for persons with disabilities. Any recommended changes to structures or the facilities should coordinate with the planned redesign of this Park and ADA regulations.

Priority 1:

- Add a splash pad where the playground equipment and restrooms are located.
- Add ADA equipment at the existing playgrounds and wheelchair accessible picnic tables, subject to park redesign.
- Designate additional ADA spaces in the north lot by the softball field.

Priority 2:

- Add sidewalks to access ball fields and amenities as shown, subject to park redesign.
- Replace sand underneath ADA inclusive equipment with rubber surface.

Priority 3:

- Add ADA-compliant playground equipment and surfaces.
- Redesign Park to include realignment of ballfields, a bandshell, and ADA-compliant walking paths.
- Redesign restroom facility to be ADA compliant and more functional.
- Ensure all concession stands are ADA compliant for accessibility.



Platt Park Redesign Concept - Park & Recreation Commission

George Peck Park

This Park is primarily used for youth activities surrounding baseball. There are two standard ballfields and a field area for T-ball. The Park is adjoined by City-owned parking lots. Sidewalks surround the park on two of the remaining sides.

Priority 2:

- Add small sidewalk from parking lot to concession area at the northwest corner, coordinating with upgrades to the concession area.
- Coordinate upgrades to ADA inclusive play equipment with installation of rubber surface material. This may take additional funding through the budgetary process or through grants.
- Designate ADA spaces in both parking lots, and add an on-street ADA space along 13th Avenue for the south ballfield.

Priority 3: Add wheelchair accessible picnic tables.



POCKET PARKS

Pocket parks in Camanche have limited equipment and accessibility for persons with disabilities.

Triangle Park

This Park is ADA compliant. It is a lightly used park and has parking available.

Priority 3: Add wheelchair accessible picnic tables.

Anthony Park

This Park is challenging due to its limited size and available space. It has at least one swing to accommodate persons with disabilities. ADA on-street parking is found in the Parking for Parks section.

Priority 1: Add wheelchair accessible picnic tables.

Priority 2:

- Replace play equipment and sand with ADA compliant playground and rubber surface material.
- Create a walking path from the planned ADA on-street parking space to the play equipment.

Buffalo St. Park, Chicago Park, and Maxan St. Park

These are three riverfront pocket parks.

Priority 3:

- Add wheelchair accessible picnic tables and sidewalks leading to the tables and bench areas as funding becomes available.
- Coordinate improvements with offered donation of a memorial pavilion.

Lum Park

This Park is undeveloped, without amenities. Lum Park is recommended for installation of ADA compliant play equipment and a parking lot as shown in the concept plan.

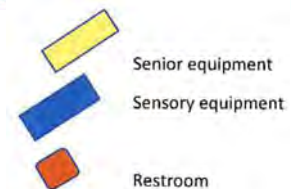
Priority 2:

- Install a sensory playground and senior exercise equipment with ADA compliant equipment and rubber surface.
- Install ADA compliant restrooms.

Sensory Playground

At first glance, a sensory playground may look similar to an everyday playground. There are some key differences and considerations for a sensory playground, which could include:

Lum Park Design Concept - Park & Recreation Commission



- A fenced-in playground to prevent a child from wandering or fleeing due to overstimulation.
- Impact-ready surfaces that can soften a fall as children with autism have a tendency to climb higher or take riskier paths on a playground that could lead to falls.
- Quiet areas of refuge, such as a grassy area, dome, alcove, or playhouse where a child can have some quiet if over-stimulated.
- Space between equipment to prevent children from running into each other and giving children with autism their space to play.
- Games a child can play alone, such as a labyrinth, chimes, kaleidoscope, mirror, or clock panel.



Sensory panels are key components of a sensory playground because they allow children with autism and sensory integration disorder to play independently and be exposed to different types of sensory stimulation. Many sensory playgrounds often highlight nature, such as opportunities to dig in dirt or sand, view butterflies, or enjoy looking at flowers and unique plants. Rubber surfacing at the play areas should be brightly colored with eye-catching designs and meet ADA regulations. Examples of items for a sensory playground are shown here.

Main St. Park

This Park does not have access to get into the park. It is, however, part of an overall concept to connect this Park to Far West Park as part of a Public Library improvement which is to include the Library Dock. The City of Camanche owns the riverfront area connecting the Public Library parcel to Main St. Park.

Main Street Park



Priority 2:

- Install a walking path to the park green space so as to eventually connect this Park and Far West Park along the river at the Public Library site (highlighted in blue).
- Coordinate improvements with offered donation of a memorial pavilion.

Priority 3:

- Connect this park via a walking path along the river to Far West Park and the path to the Library Dock and add wheelchair accessible picnic tables.

Far West Park and Library Dock

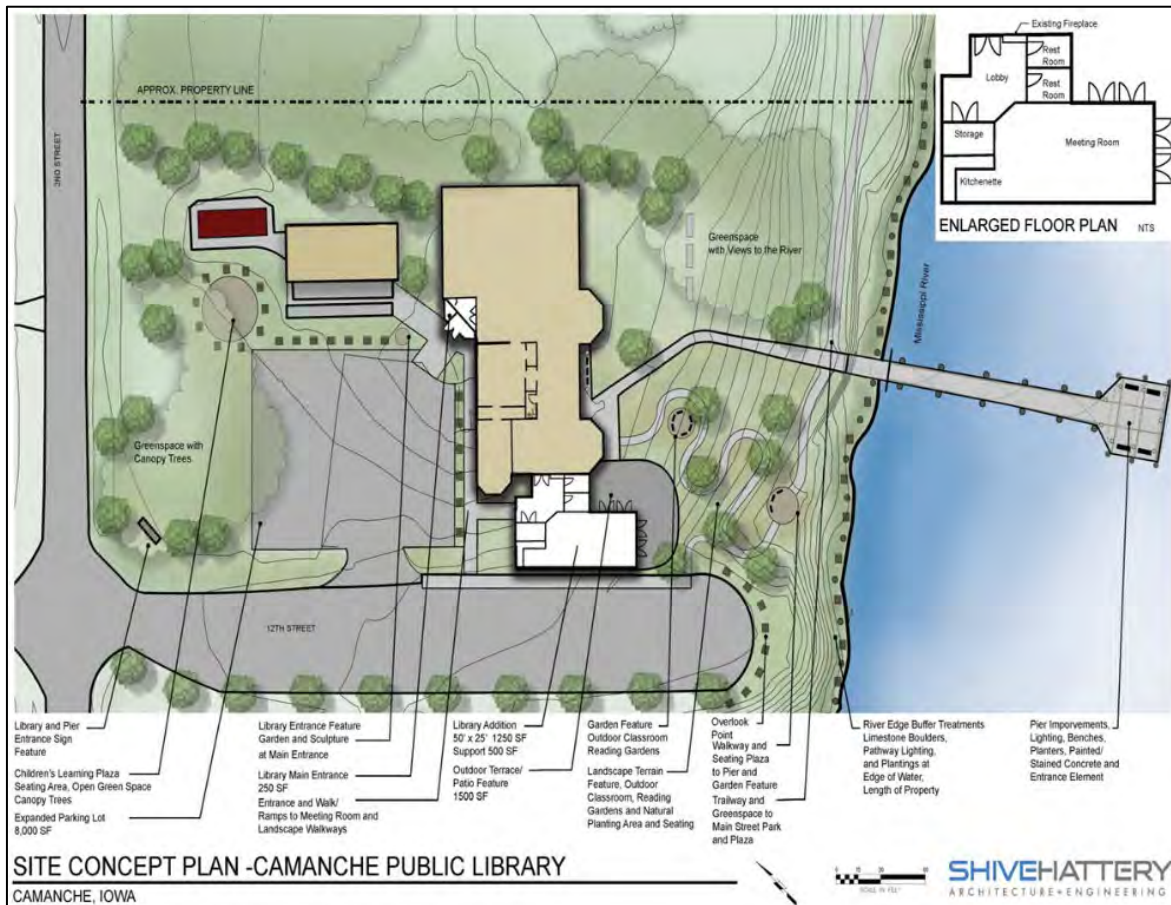


Far West Park

There is an overall improvement plan for the Public Library site (highlighted in blue) and this Park (outlined in green). The Park portion of this concept shares access improvements to the Library Dock, replacing the current sidewalk that does not match ADA grade requirements. At the Library Dock, persons with disabilities can access the river for fishing or river viewing.

Priority 3:

- Implement all aspects of the overall improvement plan for the Public Library and Far West Park as indicated in the drawing below.
- Add wheelchair accessible picnic tables.



Bike and Pedestrian Network

The City of Camanche maintains a bike and pedestrian network of off-road trails, sidewalks, and on-street routes designated as part of the Mississippi River Trail (MRT). There are a number of access points to the bike path and MRT, but there is limited parking available at Triangle Park and the Public Library. The parking for the MRT is considered adequate. The MRT routes have adequate City right-of-way to expand and install a dedicated shared use path.

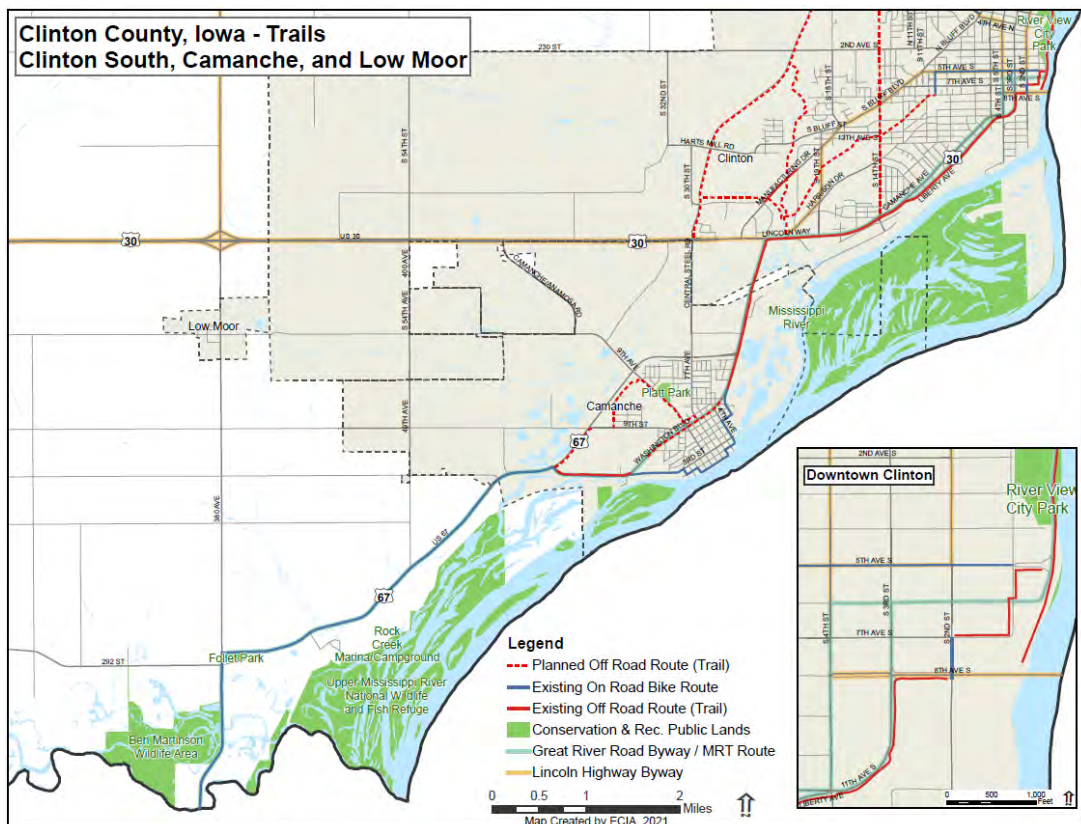
Priority 1: Expand 1st Street to accommodate a bike lane by re-establishing ditches further in the city’s right-of-way, expanding the road approximately four (4) feet and painting a bike lane on the non-river side of 1st Street. Some stormwater management work will be needed.

Priority 3: Parking will be assessed and additional parking will be established as funding allows.

Clinton County Bike and Pedestrian Plan

Communities in Clinton County located areas of high demand for bike and pedestrian facilities, identified barriers to walking and biking, and developed a list of future projects to address safety issues, expand the network, and remove barriers. Below are the City of Camanche 2020 Trail Plan projects as listed in the Clinton County Bike and Pedestrian Plan. The Plan map shows the locations of the planned bicycle and pedestrian improvement projects for Camanche and the surrounding area.

Project Name	ROW Owner	Project Type	Length Miles	Cost Estimate	Typical Cost Per mile
US Hwy 67 Trail Extension	Iowa DOT	Paved multi-use trail, flat terrain	0.69	\$165,600	\$400,000
Washington Blvd West	City of Camanche	Paved side path, urban	0.66	\$198,000	\$300,000
7th Avenue	City of Camanche	Paved side path, urban	0.06	\$18,000	\$300,000
9th Street	City of Camanche	Paved side path, urban	0.14	\$42,000	\$300,000
9th Avenue	City of Camanche	Paved side path, urban	0.67	\$201,000	\$300,000
Park Vista Phase 2	City of Camanche	Paved side path, urban	0.27	\$81,000	\$300,000
23rd Avenue	City of Camanche	Paved side path, urban	0.39	\$117,000	\$300,000
Washington Blvd East	City of Camanche	Paved side path, urban	0.35	\$105,000	\$300,000



7. STRATEGIC PLAN

Strategic planning asks three questions: Where are we now? Where do we want to be? How do we get there? In response, this section sets forth the strategic goals, the City of Camanche budget for funding park and recreation system improvements, and the timeline for phased implementation of this Plan.

Strategic Goals

The strategic planning goals for the City of Camanche's Park and Recreation System are:

- To eliminate barriers for persons with disabilities to obtain access to our municipal parks, recreation services, and related infrastructure.
- To improve connectivity and bike trail extensions within the community to promote economic development and increase safety for bicyclists and pedestrians.
- To leverage outside funding for planned improvements to the park and recreation system to enhance quality of life for the community.

Park and Recreation Budget

Successful implementation is based on commitment of community resources. The City Council has determined that our park and recreation system needs improvements for enhanced quality of life in the community. The support of the City Council in adopting a plan and budgeting for these improvements is a tremendous advantage to moving forward.

The Operating Budget and the Capital Budget make up the city's annual budget. The Operating Budget includes personnel costs and annual facility operating costs. By January 7th of each year, the Park and Recreation Commission is required by City Code to report to the City Council an estimate for operation and maintenance of recreational facilities for the coming fiscal year, the expenses for the preceding year, and the income expected for the next fiscal year from sources other than taxation. The Capital Budget funds major improvements to facilities and infrastructure. It is established annually by the City Council for a 10-year time period.

Operating Budget

The Park and Recreation Operating Budget is funded with tax dollars allocated from the General Fund and from the Commission's Cash (savings) account and Certificate of Deposit (CD). The Cash account and CD are linked so there is a place to hold money for expenditures when the CD matures.

The General Fund tax allocation is based on the Commission's annual report to the City Council. One of the Commission's duties is to oversee the spending to accomplish projected tasks and to stay within the approved budget. Funds allocated through the General Fund that do not get used in a fiscal year are returned to the General Fund.

Each year, \$5,000 is transferred to the equipment fund in the Cash account. Transfers from the Cash account are made to the spendable budget for project expenditures as approved by the City Council. If Cash funds are not used for the budgeted project(s), then the transfer does not happen. Therefore, these funds remain in the Cash account or the CD. A typical Operating Budget allocation is illustrated below.

Typical Operating Budget Allocation



Capital Improvement Budget

The City Council has adopted the 10-Year Capital Improvement Plan, which budgets \$1.5 million in park and recreation system upgrades over the next ten years to be applied in three phases.

Phase 1 will provide \$400,000 for expanding 1st Street to include the addition of a bike lane, and \$300,000 for the installation of a splash pad at Platt Park and permanent restrooms at Central Park in Fiscal Year Ending (FYE) 2022.

Phase 2 will consist of \$500,000 for the installation of an inclusive sensory playground and parking at Lum Park in FYE 2024.

Phase 3 will provide \$700,000 for redesign of Platt Park to include realignment of the ball fields around ADA compliant restrooms and concession area, a bandshell, and ADA compliant walking paths in FYE 2030. This project would need to be bonded against the tax levy.

Leveraging Outside Funding

Part of the Park and Recreation Commission’s annual report to the City Council is the income expected for the next fiscal year from sources other than taxation. Having an adopted plan with assured City funding is a powerful leverage for federal, state, regional, and private funding sources.

Many of the planned park improvements and bike and pedestrian network projects in this Strategic Plan would be eligible for grant funding from the Iowa Department of Natural Resources (IDNR), the Iowa Department of Transportation (IDOT), the Regional Planning Affiliation (RPA), and Clinton County Development Association (CCDA). These funding sources may provide 50%, 75% or more of the total project costs. These matching funds can stretch the City’s budget dramatically, allowing more of the planned improvements to be accomplished over time.

To take advantage of these outside funding sources, the Commission’s annual report should include a budget line item for services from design professionals and/or grant writers to prepare grant applications and administer grant awards as determined necessary.

It is important to note that anticipated grant funds will appear in the Park and Recreation Budget as revenue; however, if the grant funds are not received, that revenue is not available for expenditure.

Timeline

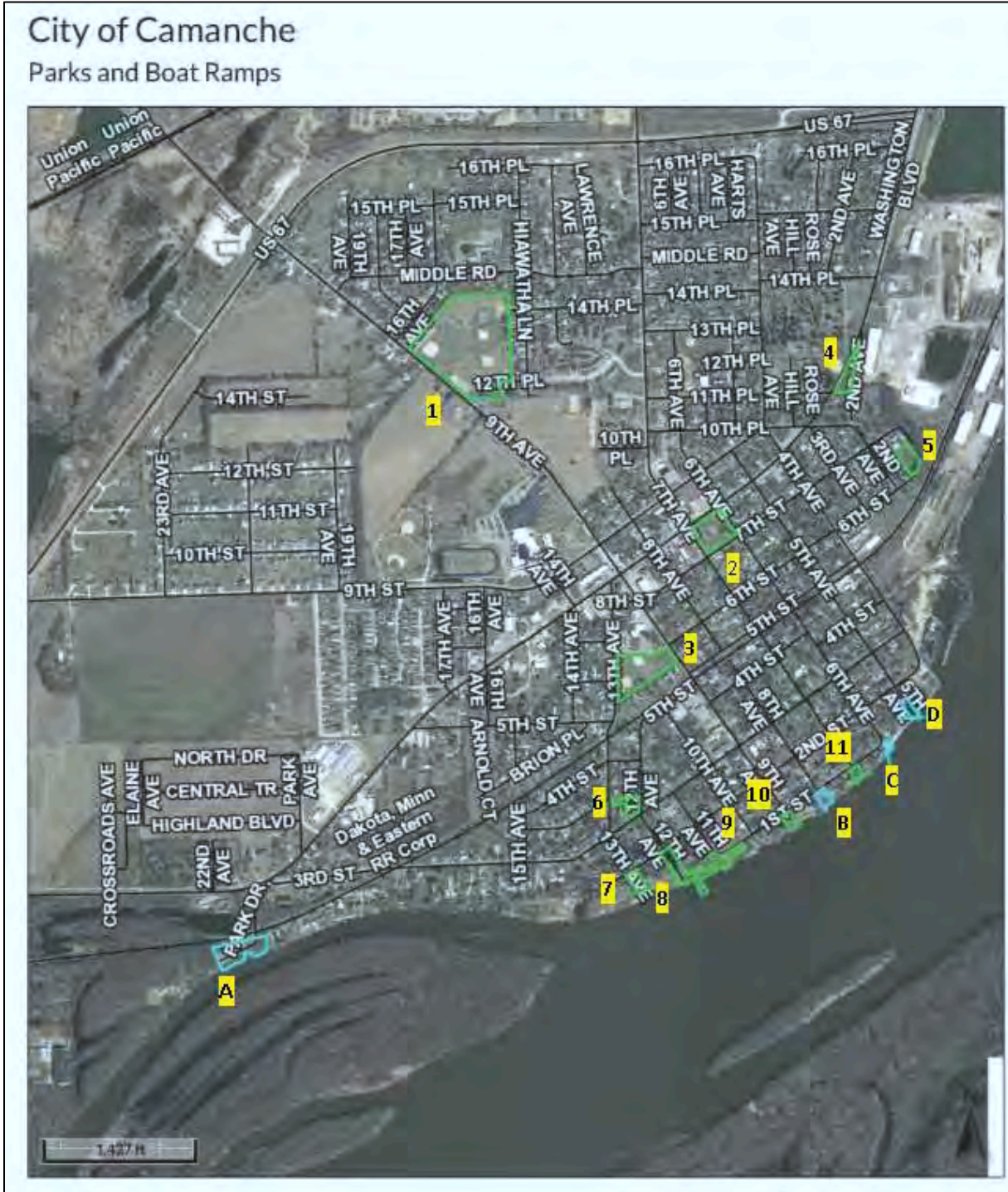
As discussed in Section 5, our approach to plan implementation, given fiscal constraints, is to prioritize the required actions and improvements. Items with a higher priority will be scheduled for completion sooner than items with a lower priority. The chart below reflects the overall prioritized timeline of where park and recreation system improvements will occur over the next ten years.

Project Location	Priority 1: FYE 2022-2024	Priority 2: FYE 2024 - 2026	Priority 3: FYE 2027 -2030
Parking for Parks	x	x	x
Central Park	x	x	x
Platt Park	x	x	x
George Peck Park		x	x
Anthony Park	x	x	
Lum Park		x	
Main St. Park		x	x
Buffalo St. Park			x
Chicago Park			x
Maxan St. Park			x
Far West Park			x

These three priority levels coincide with the three phases of park and recreation system projects in the Capital Improvement Budget over the next ten years, as shown in the chart below.

Plan Phase	Fiscal Year	Capital Improvement Project	Project Location	Budget
Phase 1	FYE 2022	1 st Street Improvements: Expansion for Bike Lane	Non-river side of 1 st Street	\$400,000
Phase 1	FYE 2022	Installation of Splash Pad in Platt Park and Restrooms in Central Park	Platt Park and Central Park	\$300,000
Phase 2	FYE 2024	Install Inclusive Sensory Playground Equipment, Parking	Lum Park	\$500,000
Phase 3	FYE 2030	Park Redesign: <ul style="list-style-type: none"> • Ball Fields Realignment • Bandshell • ADA-compliant Walking Paths 	Platt Park	\$700,000

8. Aerial Maps of City Parks and Boat Ramps



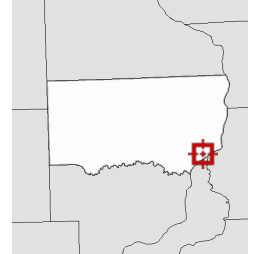
Prepared by ECIA using Clinton County Beacon GIS

City of Camanche



Platt Park



Overview



Legend

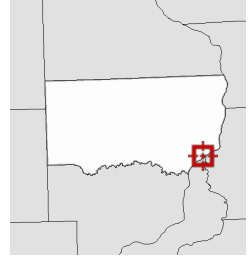
-  Railroad Center lin
-  Road Centerlines

Date created: 9/8/2021
Last Data Uploaded: 9/8/2021 12:15:15 AM

City of Camanche
Central Park



Overview



Legend

- + Railroad Center lin
- Road Centerlines

Date created: 9/8/2021
Last Data Uploaded: 9/8/2021 12:15:15 AM

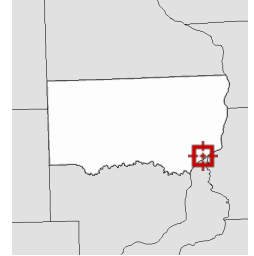
Developed by  **Schneider**
GEOSPATIAL

City of Camanche



George Peck Park



Overview



Legend

-  Railroad Center lin
-  Road Centerlines

Date created: 9/8/2021
Last Data Uploaded: 9/8/2021 12:15:15 AM

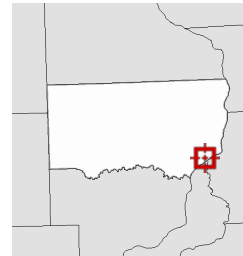
Developed by  Schneider
GEOSPATIAL

City of Camanche

Triangle Park



Overview



Legend

-  Railroad Center lin
-  Road Centerlines

Date created: 9/8/2021
Last Data Uploaded: 9/8/2021 12:15:15 AM

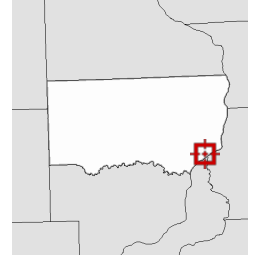
Developed by  **Schneider**
GEO SPATIAL

City of Camanche



Lum Park



Overview



Legend

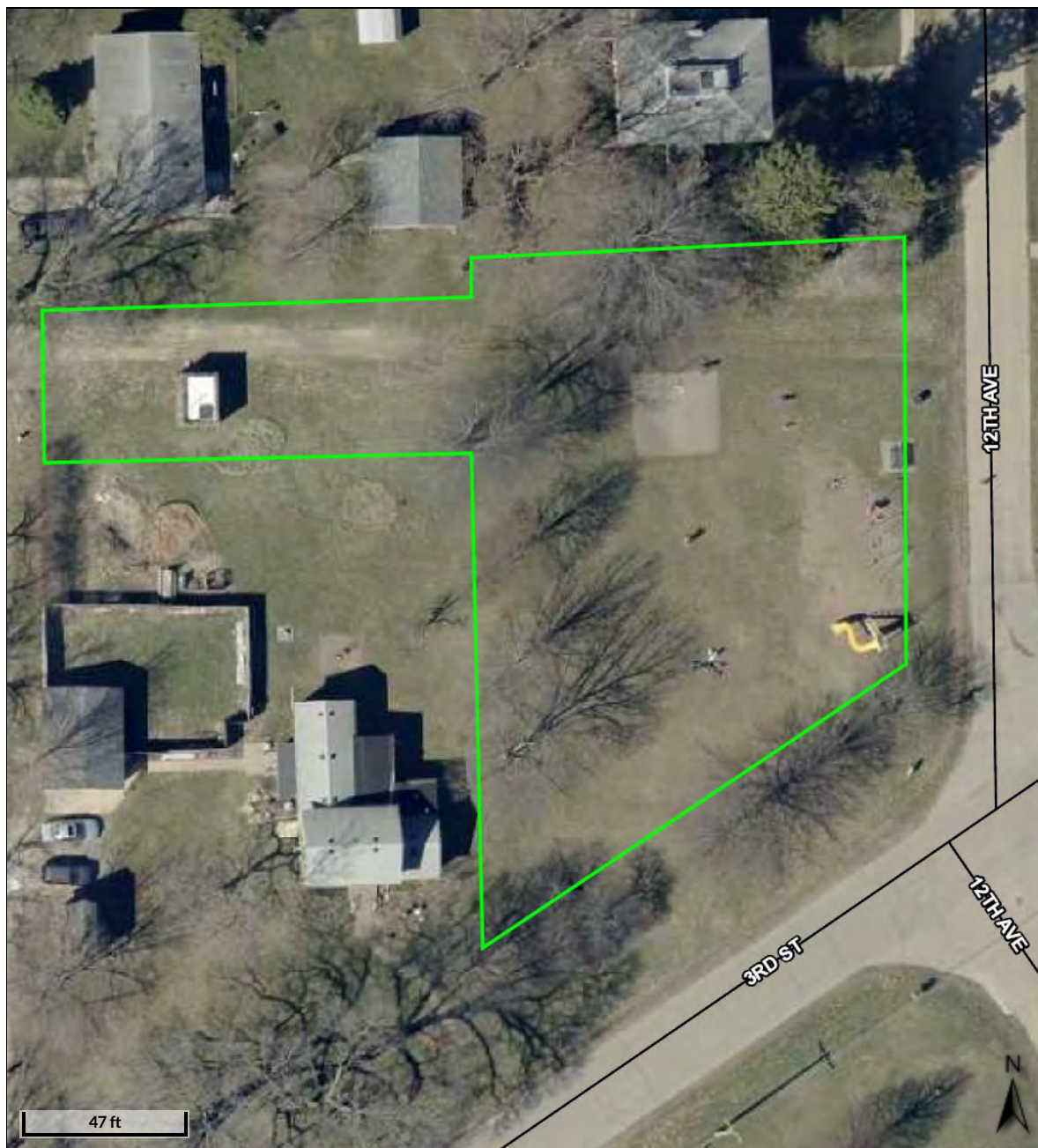
-  Railroad Center lin
-  Road Centerlines

Date created: 9/8/2021
Last Data Uploaded: 9/8/2021 12:15:15 AM

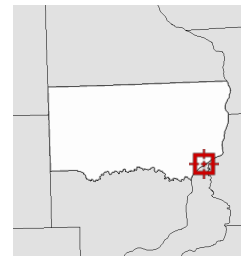
Developed by  Schneider
GEOSPATIAL

City of Camanche

Anthony Park



Overview



Legend

-  Railroad Center lin
-  Road Centerlines

Date created: 9/8/2021
Last Data Uploaded: 9/8/2021 12:15:15 AM

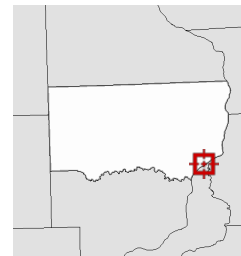
Developed by  **Schneider**
GEOSPATIAL

City of Camanche

Buffalo St. Park



Overview



Legend

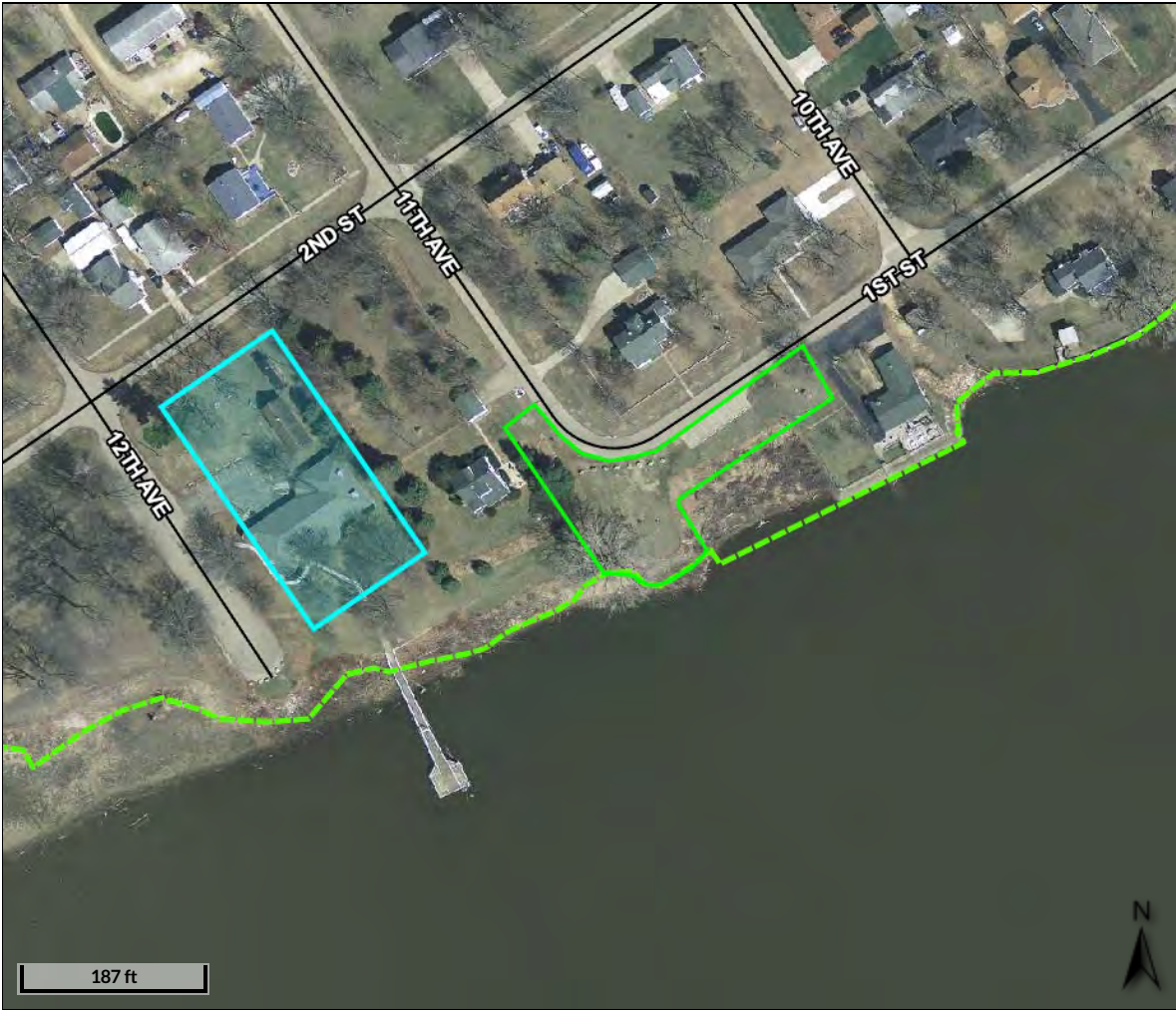
-  Railroad Center lin
-  Road Centerlines

Date created: 9/8/2021
Last Data Uploaded: 9/8/2021 12:15:15 AM

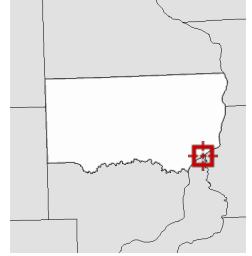
Developed by  **Schneider**
GEOSPATIAL

City of Camanche




Main Street Park



Overview



Legend

-  Railroad Center lin
-  Road Centerlines
-  Corporate Bounda

Parcel ID	1001360000	Alternate ID	2034159001	Owner Address	CITY OF CAMANCHE
Sec/Twp/Rng	n/a	Class	E		P O BOX 77
Property Address	102 12 AVE	Acreeage	n/a		CAMANCHE, IA 52730
	CAMANCHE				
District	0110				
Brief Tax Description	BLOCKS WEST OF FERRY ST IN RANGES 1 & 2 LOTS 3 TO 6 BLK 6 RG1				
	<i>(Note: Not to be used on legal documents)</i>				

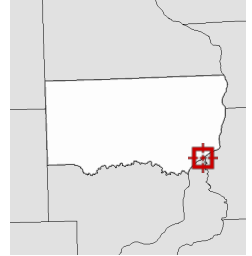
Date created: 9/15/2021
 Last Data Uploaded: 9/14/2021 10:26:04 PM

City of Camanche




Far West Park and Library Dock



Overview



Legend

-  Railroad Centerline
-  Road Centerlines
-  Corporate Boundary

Parcel ID	1001360000	Alternate ID	2034159001	Owner Address	CITY OF CAMANCHE
Sec/Twp/Rng	n/a	Class	E		P O BOX 77
Property Address	102 12 AVE	Acreeage	n/a		CAMANCHE, IA 52730
	CAMANCHE				
District	0110				
Brief Tax Description	BLOCKS WEST OF FERRY ST IN RANGES 1 & 2 LOTS 3 TO 6 BLK 6 RG1				
	<i>(Note: Not to be used on legal documents)</i>				

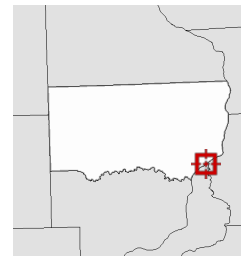
Date created: 9/15/2021
 Last Data Uploaded: 9/14/2021 10:26:04 PM

City of Camanche

Chicago Park



Overview



Legend

-  Railroad Center lin
-  Road Centerlines

Date created: 9/8/2021
Last Data Uploaded: 9/8/2021 12:15:15 AM

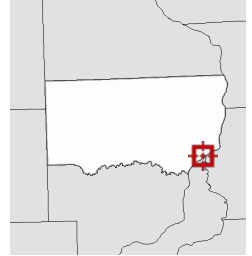
Developed by  **Schneider**
GEOSPATIAL

City of Camanche

Maxan St. Park



Overview



Legend

- + Railroad Center lin
- Road Centerlines

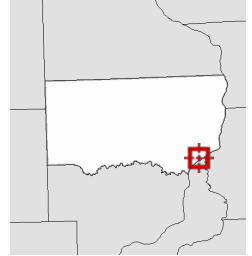
Date created: 9/8/2021
Last Data Uploaded: 9/8/2021 12:15:15 AM

Developed by  **Schneider**
GEOSPATIAL



City of Camanche
Swan Slough Boat Ramp



Overview



Legend

-  Railroad Center lin
-  Road Centerlines

Date created: 9/8/2021
Last Data Uploaded: 9/8/2021 12:15:15 AM

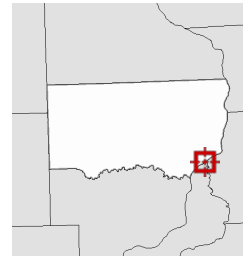
Developed by  Schneider
GEOSPATIAL

City of Camanche

8th Ave. Boat Ramp



Overview



Legend

- Railroad Center lin
- Road Centerlines

Date created: 9/8/2021
Last Data Uploaded: 9/8/2021 12:15:15 AM

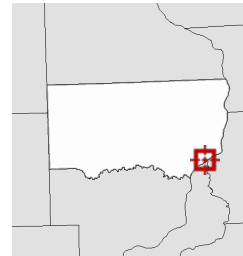
Developed by  **Schneider**
GEOSPATIAL

City of Camanche




6th Ave. Boat Ramp



Overview



Legend

-  Railroad Center lin
-  Road Centerlines
-  Corporate Bounda

Date created: 9/15/2021
Last Data Uploaded: 9/14/2021 10:26:04 PM

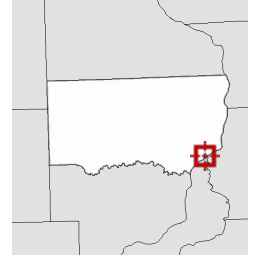
Developed by 

City of Camanche

5th Ave. Boat Ramp



Overview



Legend

- + Railroad Center lin
- Road Centerlines

Date created: 9/8/2021
Last Data Uploaded: 9/8/2021 12:15:15 AM

Developed by  Schneider
GEOSPATIAL